

TOPOGRAPHIC SURVEY OF DRIFTWOOD CREEK MAGNESITE SITE



All distances are in metres and decimals thereof.

The intended plot size of this plan is 864mm in width by 560mm in height (D size) when plotted at a scale of 1:500.

LEGEND

- denotes top of bank
- denotes bottom of bank
- denotes edge of gravel
- denotes center line of road
- denotes drill hole
- △ denotes control hub set

Contour interval = 2.0 m.

Lot boundaries shown hereon are from DataBC data warehouse. Lot boundaries are approximate and subject to change upon legal survey.

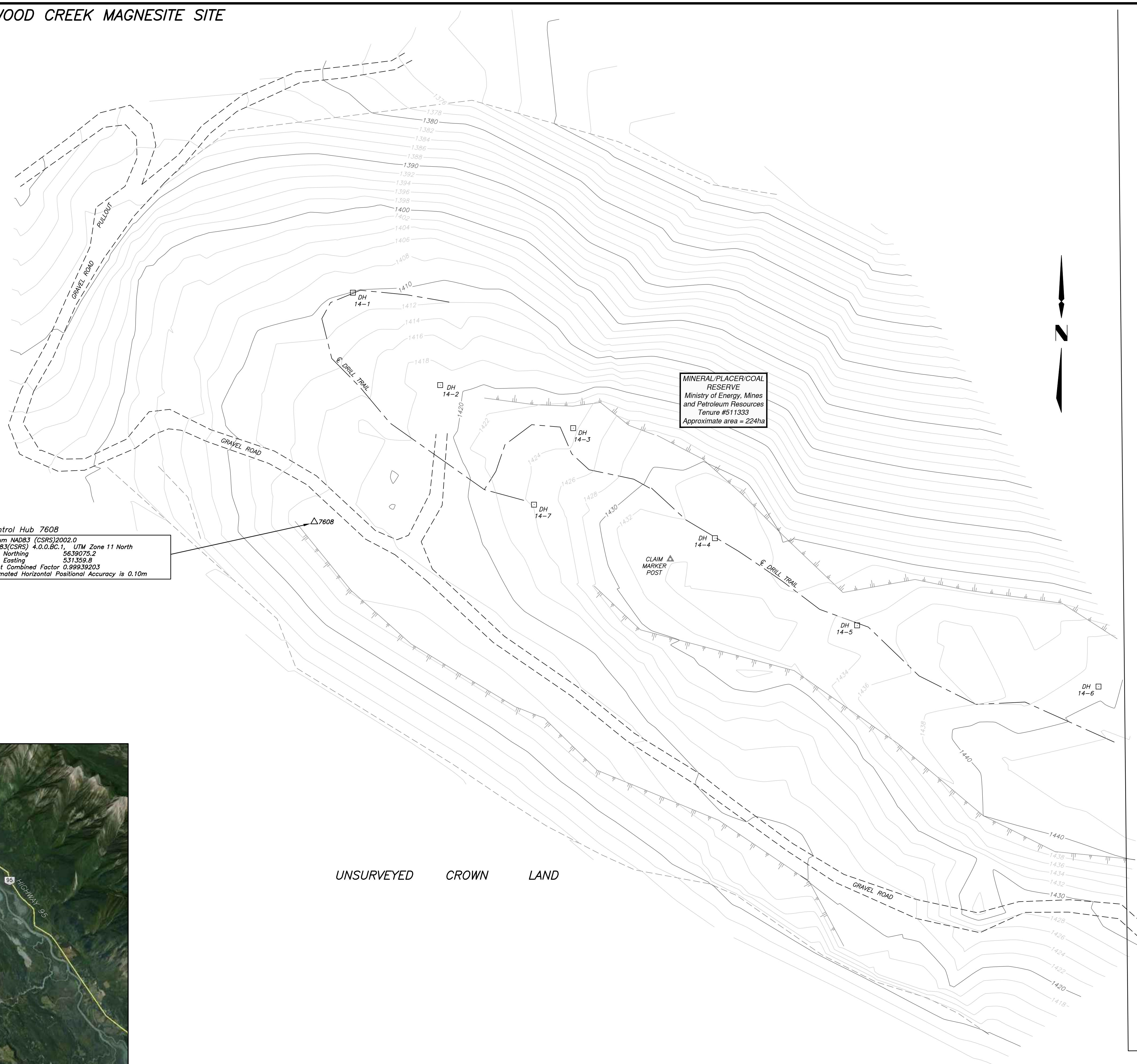
Date of field survey: October 14 - 16, 2014

Grid bearings and UTM coordinates are derived from GNSS observations and are referred to the central meridian of UTM zone 11.

The UTM coordinates and estimated horizontal positional accuracy achieved are derived using Precise Point Positioning service of Natural Resources Canada.

Elevations are derived from GNSS observations using Precise Point Positioning service of Natural Resources Canada.

Vertical Datum CGVD28 (HTV2.0)



Control Hub 7608
 Datum NAD83 (CSRS)2002.0
 NAD83(CSRS) 4.0.0.BC.1, UTM Zone 11 North
 UTM Northing 5639075.2
 UTM Easting 531359.8
 Point Combined Factor 0.99939203
 Estimated Horizontal Positional Accuracy is 0.10m

MINERAL/PLACER/COAL RESERVE
 Ministry of Energy, Mines and Petroleum Resources
 Tenure #511333
 Approximate area = 224ha

DL 9960

UNSURVEYED CROWN LAND



FOCUS			
<small>Focus Surveys (BC) Limited Partnership 7120 - 10th Street, Invermere, BC t: 250-342-9767 www.focus.ca</small>			
PROJECT			
MGX MINERALS INC.			
<small>PROJECT REF.</small>			
TOPOGRAPHIC SURVEY DRIFTWOOD CREEK			
<small>DRAWN</small>	<small>DATE</small>	<small>CHECKED</small>	<small>SCALE</small>
mfr	2014-10-31	mr	1:500
<small>SHEET No.</small>			
010051467-BNSI-R00			